

To arrange a viewing  
please call 01908 675747



\*\*\*\*\*MONTHLY RENTAL FOR THE FIRST TWO MONTHS WILL BE £1800PCM AS THE GARAGE WILL NOT BE IN USE UNTIL THE THIRD MONTH\*\*\*\*\*

This SPACIOUS and ATTRACTIVE property BENEFITS from BUILT-IN-WARDROBES in each bedroom, DOUBLE GARAGE & PARKING, PRIVATE & ENCLOSED REAR GARDEN, DOWNSTAIRS STUDY, TWO ENSUITES...

In further detail, this spacious family home comprises, entrance hall, kitchen/breakfast room, separate utility, living room, study/office, dining room and a downstairs cloak room to complete the ground floor. Upstairs boasts four spacious double bedrooms with built in wardrobes in each. The master benefits from a separate dressing room and four piece ensuite bathroom also the second bedroom offers an ensuite shower room. Outside offers a completely private rear garden and access into the double garage which offers space for further parking and security.

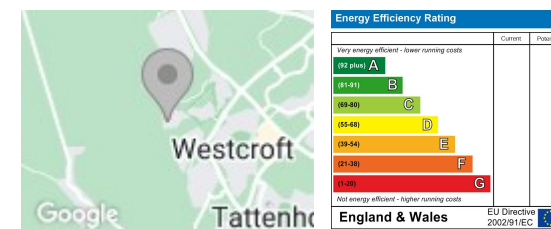
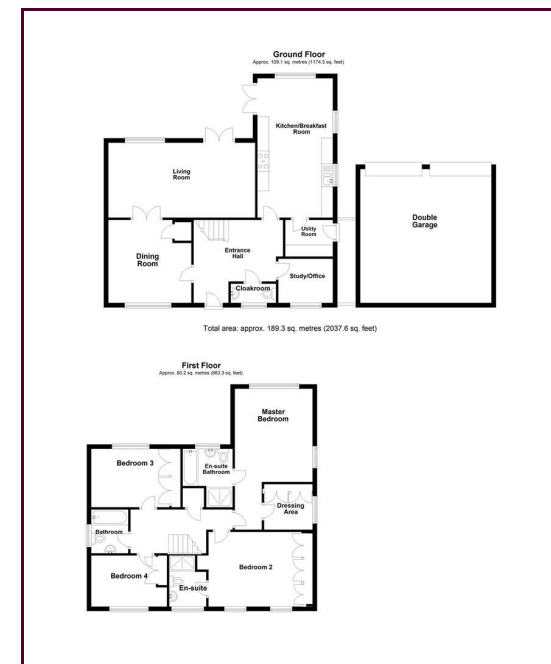
This property is offered unfurnished and available beginning of April. EPC Rating: C

Minimum Contract Length: 6 Months  
Deposit equivalent to 5 weeks rent  
Council Tax Band: F

- Double Garage & Parking
- Detached Property
- Two Ensuites & Dressing Room
- Built In Wardrobes to all Bedrooms
- Downstairs Study/Office
- Private & Enclosed Rear Garden

### LOCATION: OXLEY PARK

Oxley Park lies to the far western side of the city. Local shopping can be carried out at the nearby Westcroft Centre, which has a large supermarket and varied selection of other stores. Schools within the area include Oxley Park Primary School and Hazeley School for secondary education.



### Draft Details

These details have been submitted to our clients but at the moment have not been approved by them. We therefore, cannot guarantee their accuracy and they are distributed on this basis. Please ensure you have a copy of our approved details before committing yourself to any expense.

Whilst we endeavour to make our sales details accurate and reliable, if there is any point which is of particular importance to you, please contact the office and we shall be pleased to check any information for you. Do so, especially if travelling any distance to view the property.

The mention of any appliances and/or services within these details does not imply they are in full and efficient working order.

Any plans included within these details are a GUIDE TO THE LAYOUT OF THE PROPERTY ONLY and are NOT DRAWN TO SCALE. Dimensions are approximate.

### Mortgage Information

We can offer independent mortgage advice. Please call us to discuss your requirements. Your home may be repossessed if you do not keep up repayment on your mortgage or any loans secured on it.

### Property Valuations

We have some of the most experienced property valuers in Milton Keynes and would welcome the opportunity to carry out a VALUATION and MARKET APPRAISAL of your home.

### Viewing Arrangements

Please call us to make an appointment to view this property.

Monday to Friday 9.00 am - 6.00 pm  
Saturday 9.00 am - 4.00 pm  
Sunday CLOSED

